

A REQUEST FOR PROPOSAL
FOR
PERSONAL SERVICES CONTRACT

Department of Highways
Professional Services Procurement Bulletin 2012-11
Hopkins/Union/Union/Daviess/Ohio
2-1072, 2-1073, 2-1074, 2-1075, 2-1077

This document constitutes a Request for Proposals for Personal Service Contract from qualified individuals and organizations to furnish those services as described herein for the Commonwealth of Kentucky, Department of Highways.

I. PROJECT DESCRIPTION

County – A. Hopkins
 B. Union
 C. Union
 D. Daviess
 E. Ohio

Route – A. KY 260
 B. KY 359
 C. KY 359
 D. PR 1212
 E. CR 1194

Item No – A. 2-1072
 B. 2-1073
 C. 2-1074
 D. 2-1075
 E. 2-1077

Project Description –
 A. Replace bridge on KY 260 over Otter Creek 0.2 miles east of Pennyrile Parkway
 B. Replace bridge on KY 359 over Lost Creek 0.95 miles northeast of Junction US 60
 C. Replace bridge on KY 359 over Sinking Creek 1.1 miles northeast of Junction US 60
 D. Replace bridge on PR 1212 over Tributary Panther Creek 0.4 miles east of KY 279
 E. Replace bridge on CR 1194 over Threelick Creek 0.15 miles west Junction CR 5172.

II. PROJECT INFORMATION

Project Manager – John Rudd, P.E.

User Division - Highway Design

Approximate Fee – A. \$100,000
 B. \$100,000
 C. \$100,000
 D. \$100,000
 E. \$100,000

Project Funding – A. BRX
 B. BRO
 C. BRO
 D. BRZ
 E. BRZ

Project Length – Approximately 0.15 miles each

III. PURPOSE AND NEED

- A. The purpose of this bridge replacement is to replace a 50 year old, multiple box beam bridge, 44.0' total length, (054B00022N) in order to provide a safe, reliable roadway. The existing bridge on KY 260, mp 2.140, has a sufficiency rating of 49.80. The beams have longitudinal cracks and the abutments are experiencing erosion. The bridge replacement will improve safety and substandard condition of the bridge.
- B. The purpose of this bridge replacement is to replace a 74 year old, stringer/girder bridge, 61.0 total length, (113B00006N) in order to provide a safe, reliable roadway. The existing bridge on KY 359, mp 0.971, has a sufficiency rating of 46.2. The open girder beams are rusting and scaling. All of the timber piling is deteriorating. The bridge replacement will improve safety and the substandard condition of the bridge.
- C. The purpose of this bridge replacement is to replace a 74 year old, stringer/girder bridge, 61.0' total length, (113B00007N) in order to provide a safe, reliable roadway. The existing bridge on KY 359, mp 1.193, has a sufficiency rating of 27.5. The open girder beams are rusting and scaling. All of the timber piling is deteriorating. The bridge replacement will improve safety and the substandard condition of the bridge.
- D. The purpose of this bridge replacement is to replace a 92 year old, thru-truss bridge, 60.0' total length, (030C00168N) in order to provide a safe, reliable roadway. The existing bridge on PR 1212, mp 0.725, has a sufficiency rating of 16.8. The timber decking is loose, cracking, and not in contact with stringers unless loaded. All the steel is 100% rusty and pitted with some surface section loss. The bridge replacement will improve safety and the substandard condition of the bridge.
- E. The purpose of this bridge replacement is to replace a 25 year old, stringer/girder bridge, 40.0' total length, (092C00128N) in order to provide a safe, reliable roadway. The existing bridge on CR 1194, mp 0.079, has a sufficiency rating of 2.00. The steel half-pipes are deformed from possible overloading. The bridge replacement will improve safety and the substandard condition of the bridge.

IV. DBE REQUIREMENT

The consultant team shall include a DBE Participation Plan with their response to announcement. An additional page will be allowed with the project approach in the Response to Announcement to convey this plan. A maximum of 4 points will be considered in the evaluation factors for the DBE Participation Plan.

V. SCOPE OF WORK

The selected consultant will provide engineering services to perform Phase I and Phase II Roadway Design, including drainage design, right-of-way plans, and construction plans, traffic control plans, cost estimates, and advanced situation folders for structural design.

VI. SPECIAL INSTRUCTIONS

The Department may retain any of the services advertised here to be performed by in-house state forces.

Instructions for Response to Announcement can be found at:

http://transportation.ky.gov/properform/instructions_for_response_to_kentucky_transportation_cabinet_6-9-09.pdf

VII. AVAILABLE STUDIES

[2-1072; 2-1073; 2-1074; 2-1075; 2-1077 Inspection Reports](#)

VIII. METHOD OF DESIGN

The selected consultant shall utilize the most recent CADD Standards for Highway Plans (version 2.04) Policy in the development of the highway plans.

IX. ENVIRONMENTAL

The Department will provide all necessary Environmental Services required for this project. A CE Level 1 is anticipated.

X. PHOTOGRAMMETRIC SERVICES

Photogrammetry is not required; the consultant will be responsible for conventional survey.

XI. STRUCTURE DESIGN

The selected consultant shall provide the necessary engineering service to submit an Advanced Situation Folder(s) to the KYTC for the appropriate applicable structure(s). The structure design will be performed by the Cabinet. Structure Design services may be added to the contract agreement by contract modification. Prequalification in the area of structure design is required to be identified in the Consultant's Response to Announcement.

XII. GEOTECHNICAL SERVICES

The Department will provide all Geotechnical Services for the project.

XIII. TRAFFIC

The Department will provide all the necessary traffic projections and related information required for this project.

XIV. UTILITY DESIGN

N/A

XV. PREQUALIFICATION REQUIREMENTS

To respond to this project, the consultant project team must be prequalified in the following areas by the date of this advertisement.

ROADWAY DESIGN

- [Rural Roadway Design >\\$250,000](#)
- [Surveying](#)

STRUCTURES

- [Spans under 500 feet](#)

XVI. PROCUREMENT SCHEDULE

Dates other than Response Date are tentative and provided for information only.

RESPONSE DATE • July 11th, 4:30 p.m. E.S.T. (Frankfort time)

FIRST SELECTION COMMITTEE • July 16th, 2012

SECOND SELECTION COMMITTEE • August 1st, 2012

PRE-DESIGN CONFERENCE • August 8th, 2012

TENTATIVE DEADLINE FOR CONSULTANT FEE PROPOSAL • September 1st, 2012

CONTRACT NEGOTIATIONS • September 15th, 2012

NOTICE TO PROCEED • October 15th, 2012

XVII. PROJECT SCHEDULE

PRELIMINARY LINE AND GRADE • June 1, 2013

FINAL JOINT INSPECTION • November 1, 2013

RIGHT-OF-WAY/UTILITY PLANS • January 15, 2014

FINAL PLANS • October 1, 2014

XVIII. EVALUATION FACTORS

Consultants will be evaluated by the selection committee based on the following, weighted factors:

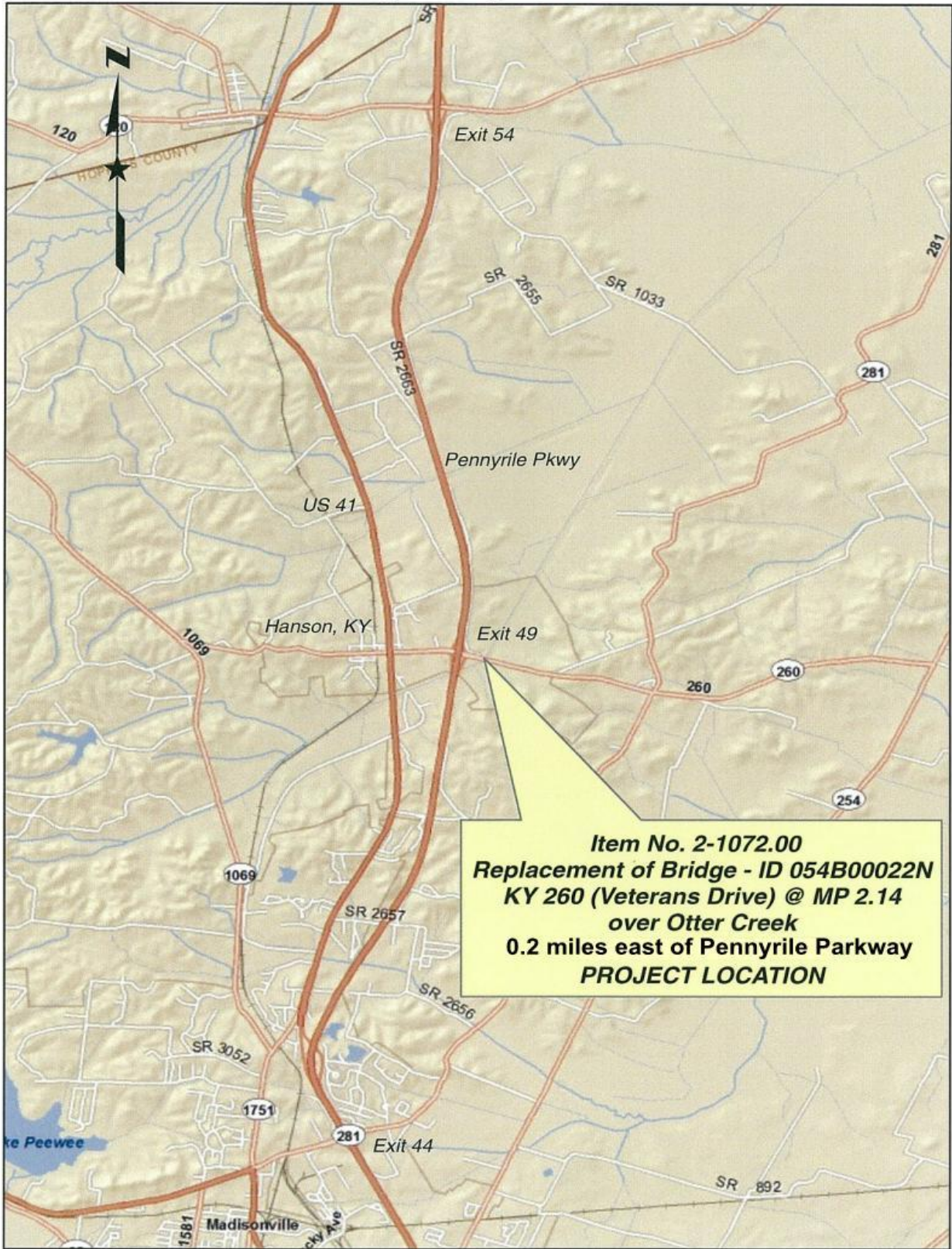
1. Relative experience of consultant personnel assigned to project team with highway project for KYTC and/or federal, local or other state governmental agencies. (10 Points)
2. Capacity to comply with project schedule. (10 Points)
3. Past record of performance on projects similar in type and complexity. (10 Points)
4. Project approach and proposed procedures to accomplish the services for the project. (10 Points)
5. DBE Participation Plan (4 Points)
6. Consultant's offices where work is to be performed. (2 Points)

For state-funded projects, if a Selection Committee vote results in a tie between two (2) firms, one (1) of which will perform more of the work tasks in Kentucky than the other, then the former firm shall be ranked one (1) place ahead of the latter.

XIX. SELECTION COMMITTEE MEMBERS

1. John Rudd, PE, User Division
2. David Martin, PE, User Division
3. TBD, PE, Secretary's Pool
4. TBD, PE, Secretary's Pool
5. TBD, PE, Governor's Pool

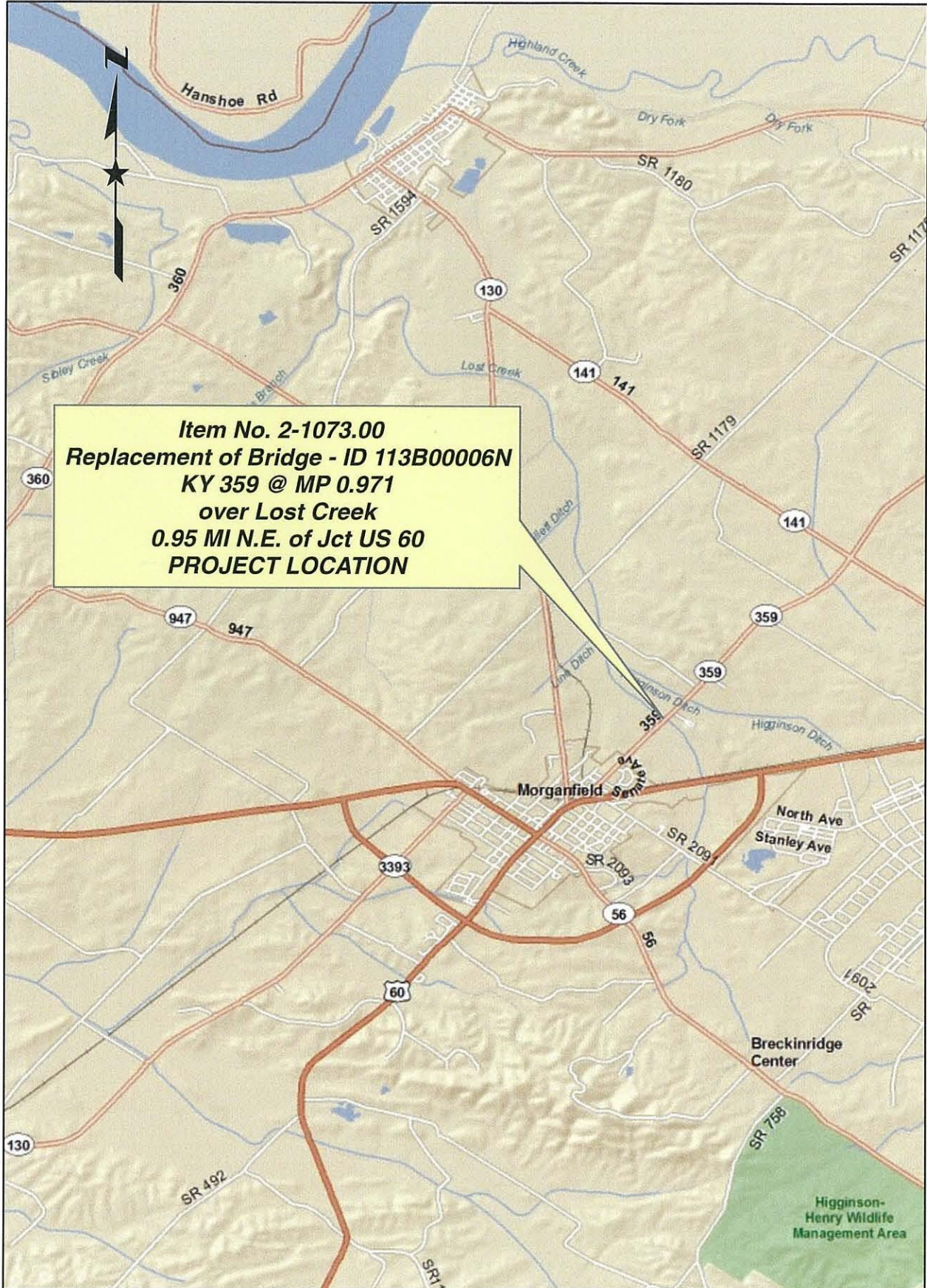
Hopkins County 2-1072.00 Bridge Replacement



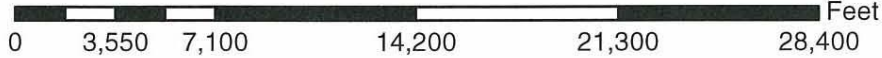
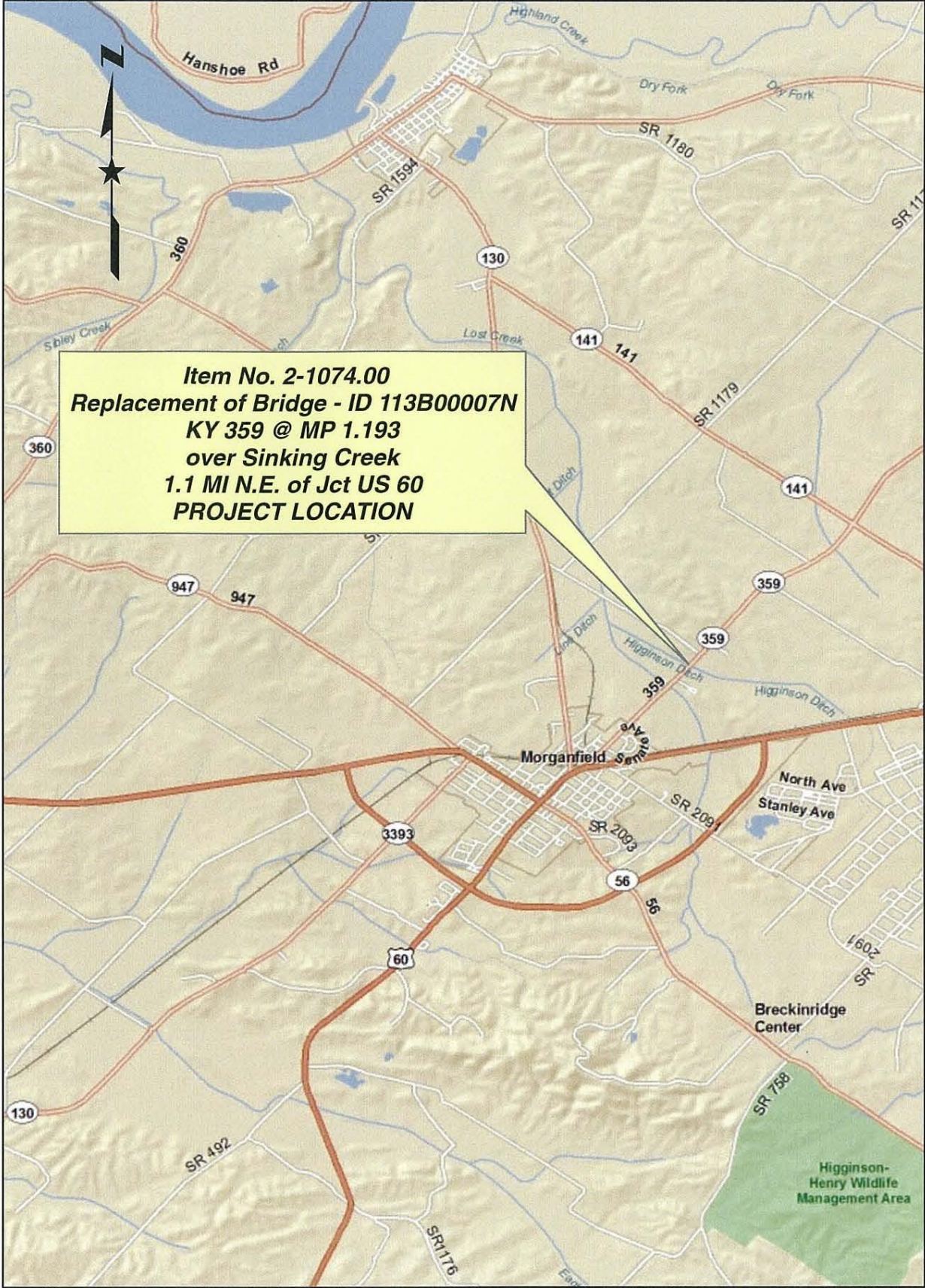
Item No. 2-1072.00
Replacement of Bridge - ID 054B00022N
KY 260 (Veterans Drive) @ MP 2.14
over Otter Creek
0.2 miles east of Pennyrile Parkway
PROJECT LOCATION

0 3,550 7,100 14,200 21,300 28,400 Feet

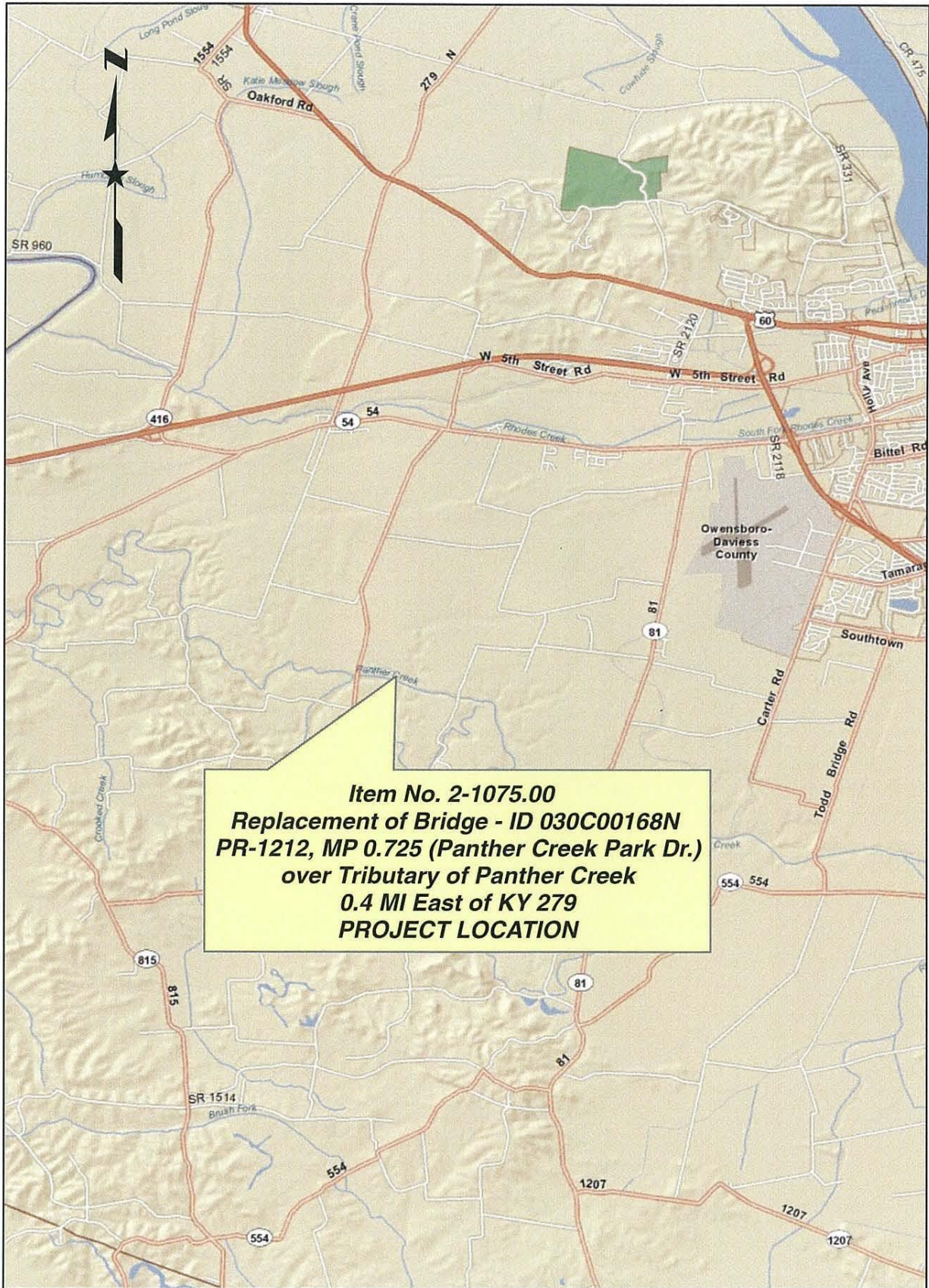
Union County 2-1073.00 Bridge Replacement



Union County 2-1074.00 Bridge Replacement



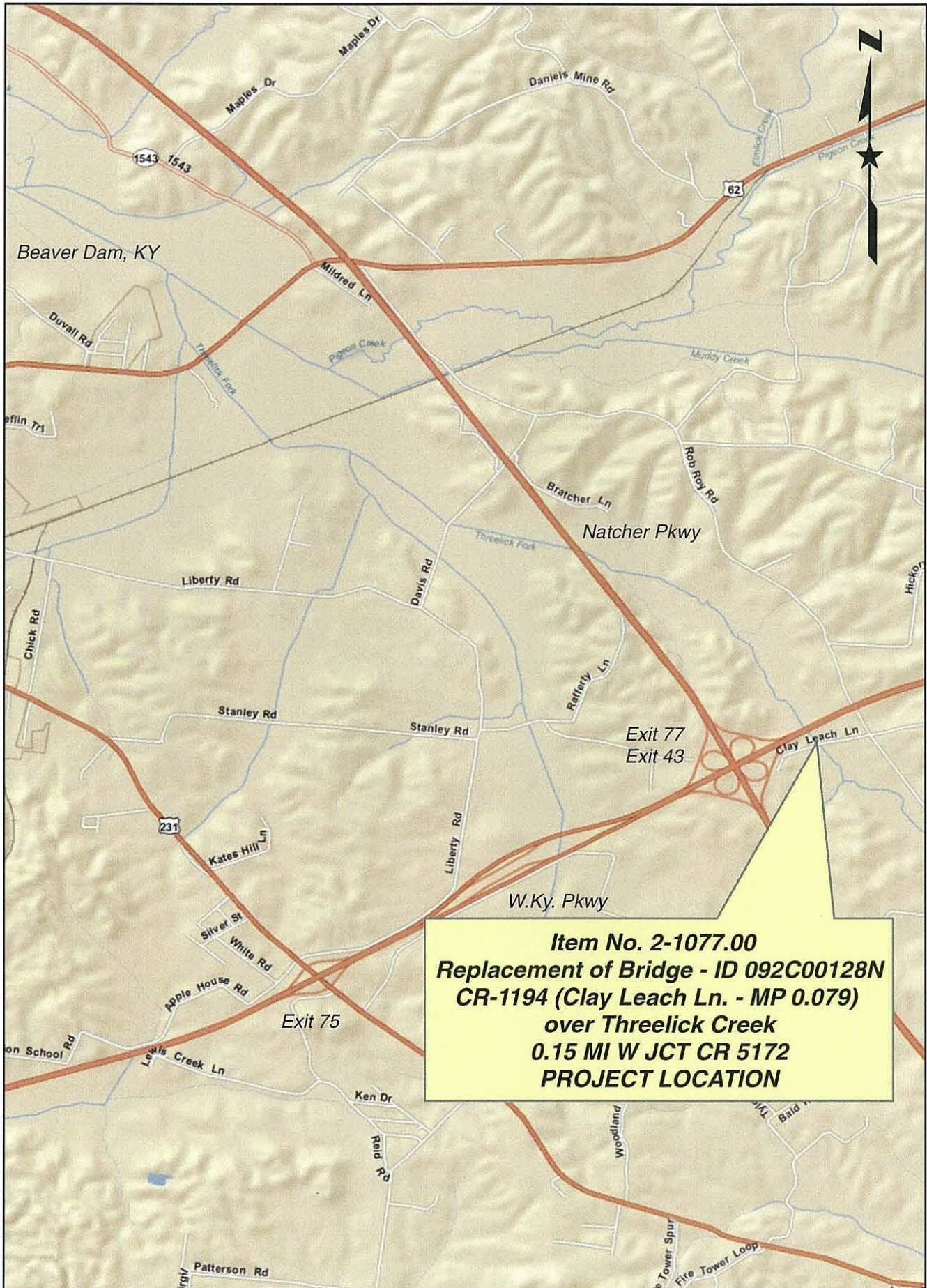
Daviess County 2-1075.00 Bridge Replacement



Item No. 2-1075.00
Replacement of Bridge - ID 030C00168N
PR-1212, MP 0.725 (Panther Creek Park Dr.)
over Tributary of Panther Creek
0.4 MI East of KY 279
PROJECT LOCATION



Ohio County 2-1077.00 Bridge Replacement



0 2,200 4,400 8,800 13,200 17,600 Feet